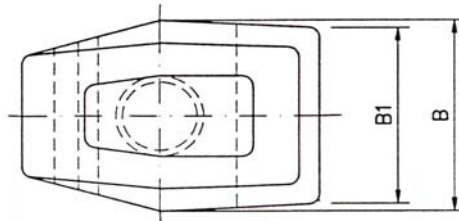


recommended tightening torque:

L-11,5/A/B	-	33 Nm
L-14	-	56 Nm
L-18	-	141 Nm



- ① guide clip
- ② nut

	ex stock	on request
screw	forged steel quality 5.8, zinc plated	brown
nut	DIN 555 quality 6, zinc plated	zinc plated

guide rail profile	guide clip	Ø	A	B	B ₁	C	D	E	F	L	M
45 x 45 x 5	L-11,5/A	10	35	23	20	12	3	37	9	19	5
50 x 50 x 5	L-11,5/A	10	35	23	20	12	3	37	9	19	5
70 x 65 x 9	L-11,5/B	10	35	24	20	12	5	37	9	19	7
70 x 70 x 9	L-11,5/B	10	35	24	20	12	5	37	9	19	7
82,5 x 68,25 x 9	L-14	12	42	29	26	15	5	47	10	23	7
89 x 62 x 15,9	L-14	12	42	29	26	15	5	47	10	23	7
90 x 75 x 16	L-14	12	42	29	26	15	5	47	10	23	7
125 x 82 x 16	L-18	16	54	38	35	18	6	57	14	29	8

Guide Clip Type	SLS Pt No
L-11,5/A	AH35
L-11,5/B	AH37
L-14	AH38
L-18	AH41

Note:- For fixing detail see sheet ref: 03-16